

LONDON
ZOO

a ZSL conservation zoo



VENUE HIRE

THE HUXLEY & BARTLETT

Events
by Benugo

2026

THE HUXLEY & BARTLETT →

EXPERIENCES
AND ANIMAL HOUSES →

SUSTAINABILITY SNAPSHOT →

RULES AND RESTRICTIONS →

Events
by Benugo

THANK YOU FOR YOUR INTEREST

This summer, take your corporate or private event to the next level at London Zoo. Set against the stunning backdrop of lush gardens and diverse animal houses, our unique event spaces offer an unforgettable atmosphere for any occasion.

From intimate gatherings to large-scale corporate functions, enjoy exclusive access to our captivating animal exhibits, while indulging in delicious food and refreshing drinks tailored to your event. Whether hosting a team-building day, a summer soirée, or a special celebration, London Zoo provides an extraordinary setting for memorable experiences.

Let us bring your vision to life with exceptional service and a touch of wildlife magic.

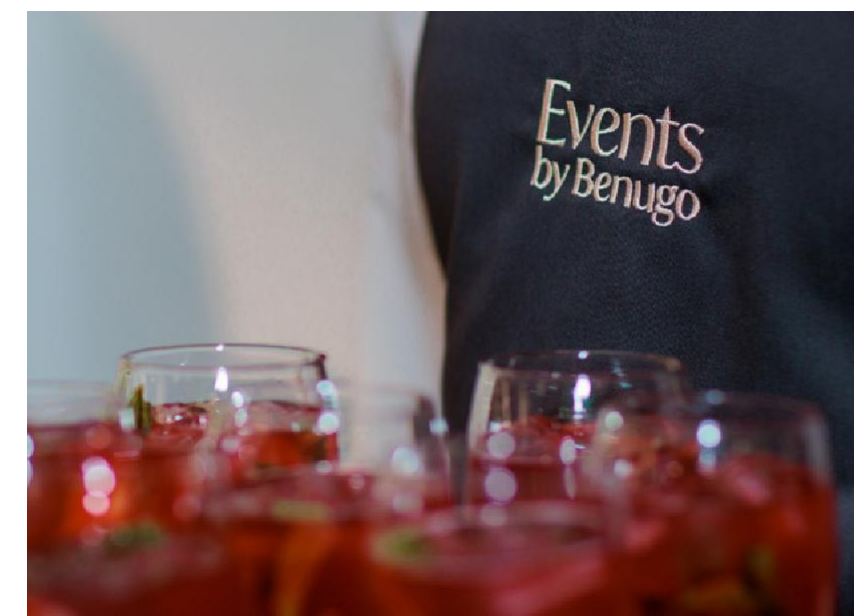
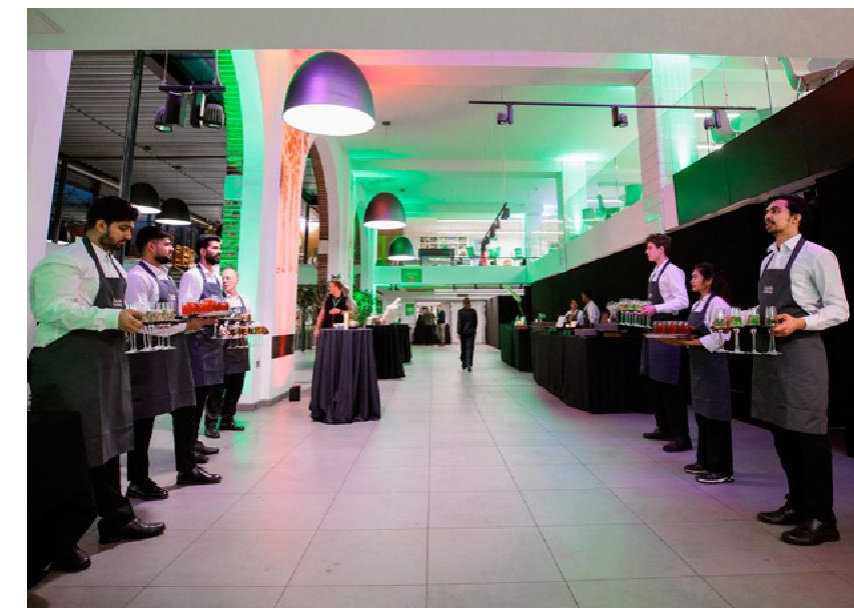
Celebrate with Events by Benugo

We serve our customers with warmth and charm and believe food should be fun, fresh and delicious. We create simple, natural food that is delivered on time and on budget. All of our seasonal, chef-curated menus are made fresh on site, or at our central production kitchen, ensuring the highest quality and taste.

We can't wait to work with you to create something truly special.

Contact

venuehire@zsl.org



THE HUXLEY & BARTLETT

HUXLEY (THEATRE STYLE)	200
THE HUXLEY AND BARTLET (THEATRE STYLE)	250
BARTLETT (THEATRE STYLE)	50
ROOM AND CATERING MINIMUM SPEND	£5,500 + VAT

These two adjoining function spaces are perfect for corporate meetings or educational presentations and can be booked separately or as one.

Whilst the Huxley Lecture Theatre features traditional fixed tiered seating, the Bartlett Suite is more versatile and can be used either as a boardroom, extra seating for the theatre or simply a breakout area.

The private foyer for the rooms boasts plenty of natural daylight and is ideal for refreshments and registration.



TECH SPEC

Camera System

Birddog 4K PTZ Camera for Stage

Birddog 4K PTZ Camera for Audience

Birddog Camera Controller

Projector System

4.5m Projector Screen

10K Panasonic Projector

Video Inputs

HDMI over HDBaseT input on Stage

HDMI Input at Control Position

Video Control

Blackmagic ATEM Production Switcher

Kramer Presentation Switcher

Loudspeakers

Yamaha VXL24

Martin Audio 10inch Subwoofer

Microphones

4 x Wireless Lapels

2 x Wireless Handhelds

8 x Gooseneck Tabletop

Audio Control

Yamaha QL1 for Advance Control

Crestron User Interrace for Basic Control





EXPERIENCES AND ANIMAL HOUSES

Ever wanted to get up close to an animal or experience the Zoo behind-the-scenes?

Perhaps, mingled with monkeys in a rainforest or fed an exotic okapi? Delight your guests, friends or family and create a memorable moment everyone will be talking about for years to come.

Tiny Giants

Tiny Giants is the Zoo's cutting edge biodiversity and conservation exhibit as well as a great venue with ability to accommodate up to 200 guests for a drinks and bowl food or canapé reception.

Tiny Giants house a range of bugs and small invertebrates of all shapes and sizes, and with numerous pockets of exciting creatures, and a large outdoor courtyard suitable for an acoustic band, this is a great party venue.

Reptile House

Host your next standing reception at The Secret Life of Reptiles and Amphibians, an extraordinary venue at London Zoo for up to 150 guests.

Immerse your guests in eight captivating habitats featuring unique creatures like the snake-eating king cobra and Philippine Crocodile. With interactive displays, guests can explore scientific tools and learn about conservation efforts while enjoying food and drinks in a stunning natural setting. Our salamanders, crocodiles, lizards and snakes will be expecting you!



EXPERIENCES AND ANIMAL HOUSES

Penguin Beach (May - August)

England's biggest penguin pool is the perfect setting for your summer evening reception for up to 300 guests.

Penguin Beach recreates a South American beach landscape in the heart of London, with a stunning colony of Humboldt penguins. A cocktail and canapé reception in such scenery creates a tranquil atmosphere in the heart of the Zoo.

Tiger territory (May - August)

Embark on a journey through an Indonesian habitat, coming face-to-face with our beautiful Sumatran tigers.

This exhibit can accommodate up to 250 for a standing reception or on a summer evening. What could be more unique than that?

Land of the Lions (May - August)

This breath-taking exhibit transport visitors from the heart of London to India's vibrant Sasan Gir providing up to 300 guests with the opportunity to be closer than ever before to mighty Asiatic lions, in truly beautiful and unique outdoor space.

This exception event space is already themed to perfection, providing a colourful and lively back drop for your evening event. This one-off event space boasts its own food outlet offering bespoke catering options, bowl food, hot canapés and cocktails. In Land of the Lions, anything is possible

Why not add to the amazing experience and book our unique overnight accommodation in the heart of Land of the Lions - ZSL London Zoo Lodges?

SUSTAINABILITY SNAPSHOT

Food and drink



Our coffee is 100% Rainforest Alliance Certified. We have chosen this certification as, in addition to trading fairly with local farmers, it also takes the planet into consideration.



At all of our sites we offer plant-based milk alternatives free of charge to encourage more frequent use.



In addition to working with UK Red Tractor our milk options are entirely UK sourced and a third is accredited organic.



96% of our fresh eggs are UK RSPCA Assured free-range. Every Benugo manufactured products, from our cakes to our sandwich fillings are made with UK free-range eggs.



We put a focus on UK sourced foods that align with seasonal availability, such as British potatoes which are available all year round, compared to strawberries which we use in their season.



We work with Life Water. Through their charity, Drop4Drop, to date we have funded 65 clean water projects, providing 52,127 people with clean water.

Other



We have consistently been working to remove packaging from back of house areas with reusable crates now being used. This has led to 17 tonnes of cardboard annually being eliminated from our supply chain.



Our cooking oil is collected by Olleco and turned into biodiesel.



We weigh and record our food waste and have a target in 2024 to reduce it by 20% from 2019.

RULES AND RESTRICTIONS

Suppliers

All entertainment, AV, DJ, lighting, theming or any external supplier must be booked via the zoo's preferred suppliers or agreed and approved with your Event Co-ordinator.

Security

Security is mandatory for all Events which fall outside of ZSL's opening hours. Should the requirements of your event change, these charges are subject to change.

Access times

Included with your booking is half and hour complimentary load in and half an hour complimentary load in and out time. If load in or out exceed these time limits, additional charges may apply.

Smoking and vaping

London Zoo is a non-smoking/vaping site during public opening times. For events that take place during these opening hours then the following rules must be observed. After hours events please ask your event manager for rules.

Prince Albert Suite & Garden Room - Guests must go out via the Prince Albert Gate to smoke/vape. Security will then check ID via the guestlist upon re-entry.

Mappin Pavilion - Guests must go to the main entrance where a member of staff will stamp the guest's hand to allow re-entry.

House keeping

Outdoor drinking concluded at 22:00 due to license restrictions. Nothing can be stuck on the walls. No balloons or confetti are permitted. Sound levels are restricted to 70dB within two meters of an animal enclosure during events. After dusk sound levels should be below 60dB and after dark 50dB. No shots or double spirits and mixers will be permitted due to licensing.

Animal welfare

Please note at this stage, in accordance with animal welfare, under no circumstances will drums or any form of percussion instrument be allowed on-site. The restrictions in place are not exhaustive of the above list and will always be subject to change, even in the immediate lead up to your Event and in some cases on the day. We reserve the right to alter your activities and external supplier without argument where required. We therefore strongly recommend you discuss any suppliers, decoration, activities etc. with your Co-ordinator.

Zoo closing times 2025/26

October 2025 - February 2026	16:00
March 2026 - September 2026	18:00
September - October 2026	17:00
October 2026 - February 2027	16:00

Last admission is one hour before advertised closing hour.

Some animal exhibits may close up to 30 minutes before closing hour.

*Last entry / closing hour on selected dates may be affected by special events.

Events by Benugo

Contact

venuehire@zsl.org

